

13

12-A
11-B
10-C
9-D+

8-D-
7-F

* All Computer *

Name:
Per:

MATH PRACTICE

Week 10

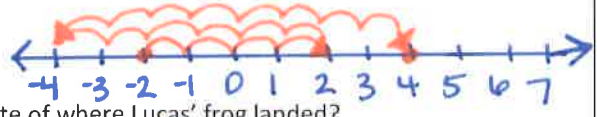
Due: Thursday, 11/1

3-94. Lucas' frog is sitting at -2 on the number line.
a. His frog hops 4 units to the right, 6 units to the left, and then 8 more units to the right. Write an expression to represent his frog's movement.

$$-2 + 4 - 6 + 8 + 1$$

b. Where does the frog land?

The frog lands on 4



c. What number is the opposite of where Lucas' frog landed?

The opposite of 4 is -4

3-98. A seed mixture contains ryegrass and bluegrass. If 40% of the mixture is ryegrass, how could this quantity be represented using a fraction?

Bonus: Simplify your fraction.

$$40\% = \frac{40}{100} + 1$$

Simplify: $\frac{40}{100} = \frac{4}{10} = \frac{2}{5}$ **BONUS**

3-96. Find each product below. Show your work using any method.

a. 18(26)

10	8	
20	200	160
6	60	48
10	8	

$$\begin{array}{r} 360 \\ + 108 \\ \hline 468 \end{array}$$

468

b. 6(3405)

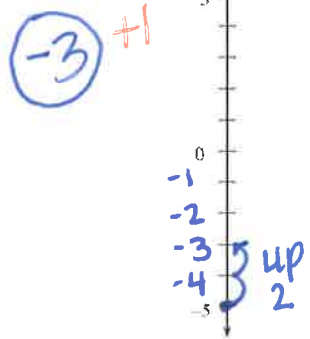
$$6(3000) + 6(400) + 6(5)$$

$$18000 + 2400 + 30$$

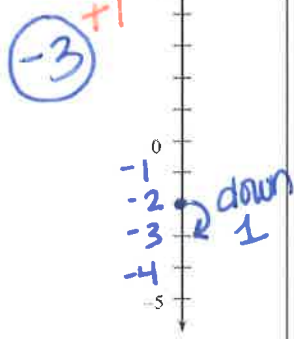
20,430

3-108. In parts (a) and (b) below, copy the vertical number lines and use them to show the solution to the problems.

a. -5 + 2



b. -2 - 1



3-106. Find the missing value in each number sentence.

a. $4 - 3.5 + 3.5 - 1 = 3$



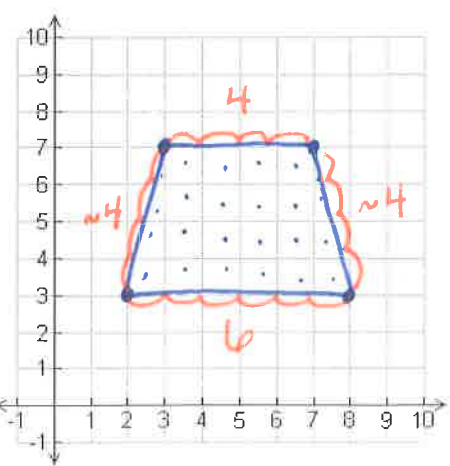
c. $5\frac{1}{3} - 7 - 5\frac{1}{3} = -7$

Hint: Look for combinations that equal zero

3-110. Use the graph to the right to answer the following questions.

a. Plot the points listed below. Then connect them in the order given and connect point D to point A.

A (2, 3), B (3, 7), C (7, 7), D (8, 3)



How: Count the squares inside the shape. Estimate.

b. What is the area of the shape that you drew?
The area is approximately 20 square units.

c. What is the perimeter of the shape you drew?
How: Estimate. Add around outside.

$4 + 4 + 4 + 6 = 18$
The perimeter is approximately 18 units.